



N-type Half-cell Monofacial Module (54)

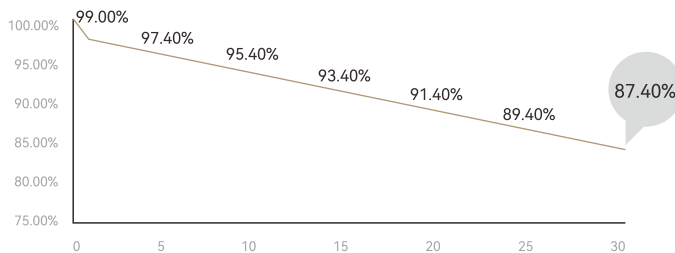
TW415~440MGT 108-H-S

PRODUCT FEATURES

- High Power Output
Low LCOE
- Maximum Power
440W+
- High Reliability
- Low LID

POWER WARRANTY

1st year <1%, 0.4% power degradation per year from 2 to 30 years



12 12-year warranty for materials

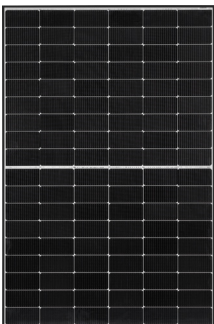
30 30-year warranty for linear power output

MANAGEMENT SYSTEM AND PRODUCT CERTIFICATION

ISO45001: 2018/Occupational Health and Safety Management System

ISO14001: 2015/Environment Management System

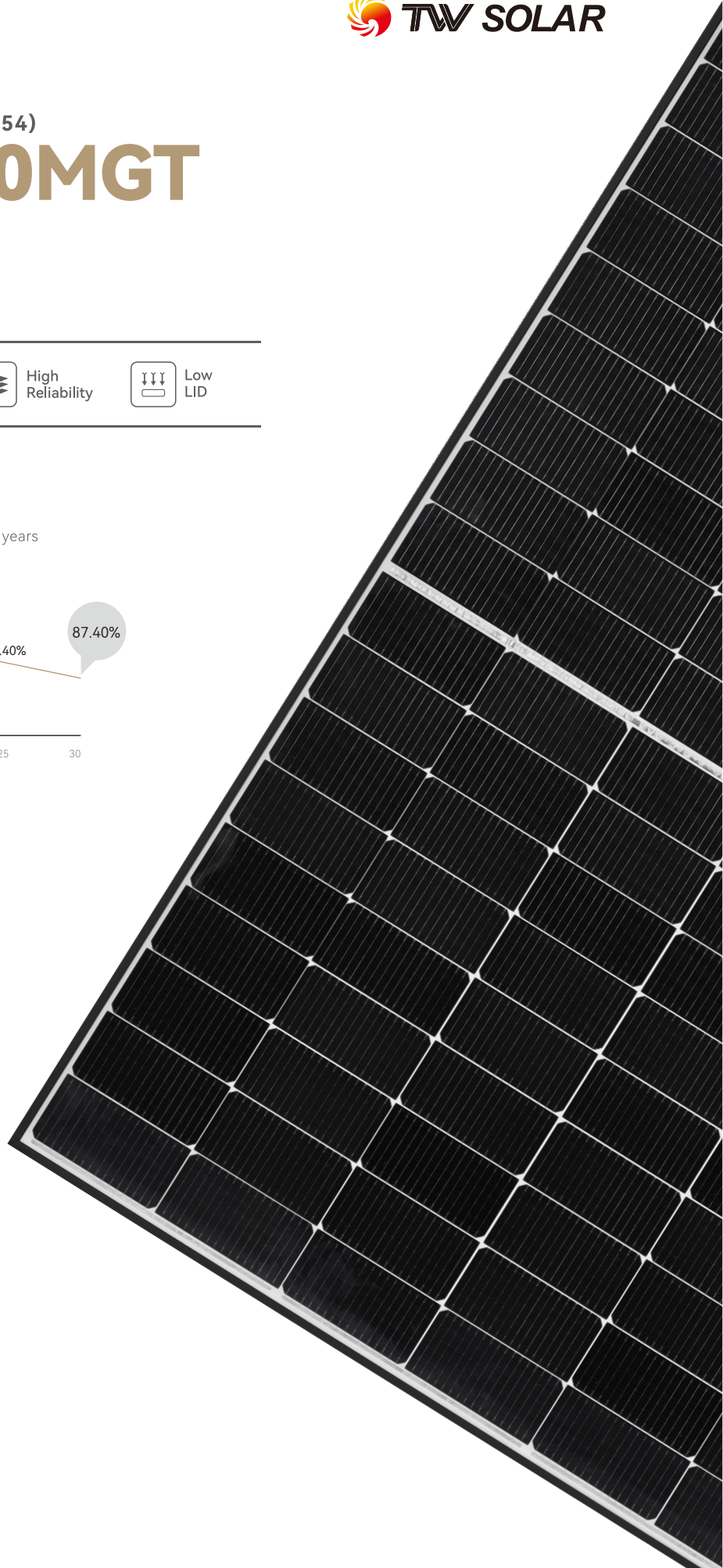
ISO9001: 2015/Quality Management System



Front



Rear



Electrical Characteristics (STC)

Module type: TW***MGT-108-H-S

Maximum power: Pmax (W)	415	420	425	430	435	440
Open circuit voltage: Voc (V)	37.85	38.00	38.15	38.30	38.45	38.60
Short circuit current: Isc (A)	14.22	14.27	14.32	14.37	14.42	14.47
Voltage at maximum power point: Vmp (V)	31.25	31.41	31.57	31.73	31.89	32.05
Current at maximum power point: Imp (A)	13.28	13.37	13.46	13.55	13.64	13.73
Module efficiency: η (%)	21.3	21.5	21.8	22.0	22.3	22.5

STC: Irradiance 1000W/m², Cell Temperature 25°C, Air Mass1.5, Measuring tolerance: \pm 3%

Electrical Characteristics (NMOT)

Maximum power: Pmax (W)	312.0	316.0	320.0	324.0	328.0	332.0
Open circuit voltage: Voc (V)	35.98	36.14	36.30	36.46	36.62	35.92
Short circuit current: Isc (A)	11.51	11.57	11.63	11.69	11.75	11.25
Voltage at maximum power point: Vmp (V)	29.18	29.34	29.50	29.66	29.82	29.02
Current at maximum power point: Imp (A)	10.69	10.77	10.85	10.92	11.00	11.44

NMOT: Irradiance 800W/m², Ambient Temperature 20 °C, Air Mass1.5, Wind Speed 1m/s

Mechanical Parameters

Cells	N-TNC
Orientation	108 (6×18)
Size	1722±2×1134±2×30mm
Weight	20.5kg
Glass	3.2mm high transmittance, AR coated heat strengthened glass
Backsheet	White
Frame	Anodized aluminum alloy frame
Junction Box	IP68, 3 diodes
Cable	4.0mm ² , Landscape: 280mm, Portrait: 280mm, length can be customized
Connector	MC4 Compatible
Wind/Snow Load	2400Pa/5400Pa
Packaging	936pcs per 40HC

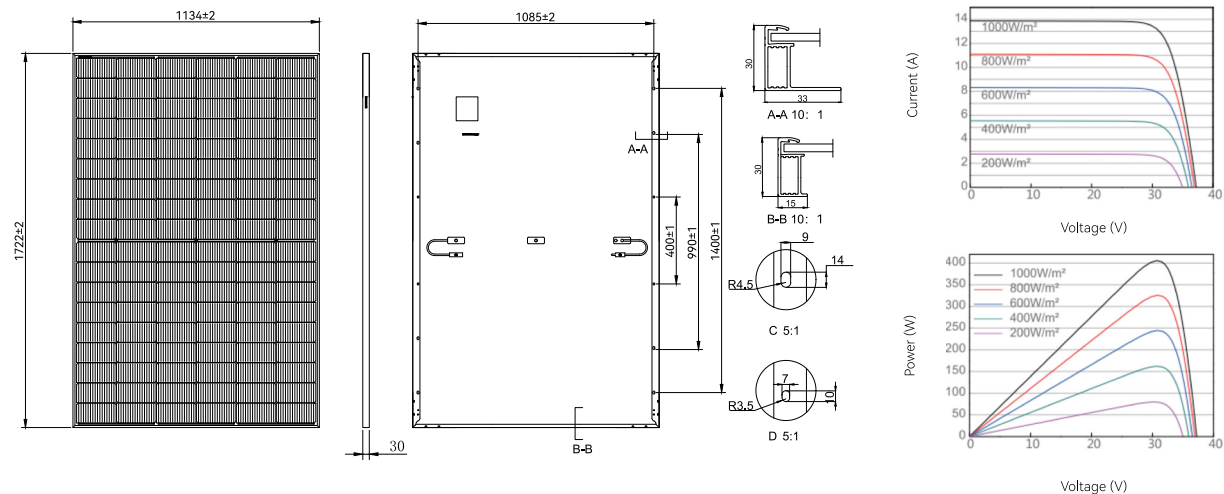
Operating Parameters

Operational Temperature	-40°C~+85°C
Maximum System Voltage	1500V DC
Maximum Series Fuse Rating	25A
Power Output Tolerance	0~+5W

Temperature Ratings

Temperature Coefficient (Pmax)	-0.3%/°C
Temperature Coefficient (Voc)	-0.25%/°C
Temperature Coefficient (Isc)	+0.046%/°C
NMOT	43±2°C

Drawings (Unit: mm)



Web: www.tongwei.com.cn Add: 888 Changning Avenue, High-tech Zone, Hefei City, Anhui Province

With technological progress and product updates, there may be deviations between the technical parameters of Tongwei's module products and the technical parameters contained in this specification, and Tongwei Solar has the right to adjust the technical parameters at any time without notifying the customer, the final interpretation of the technical specification is vested in Tongwei Solar.